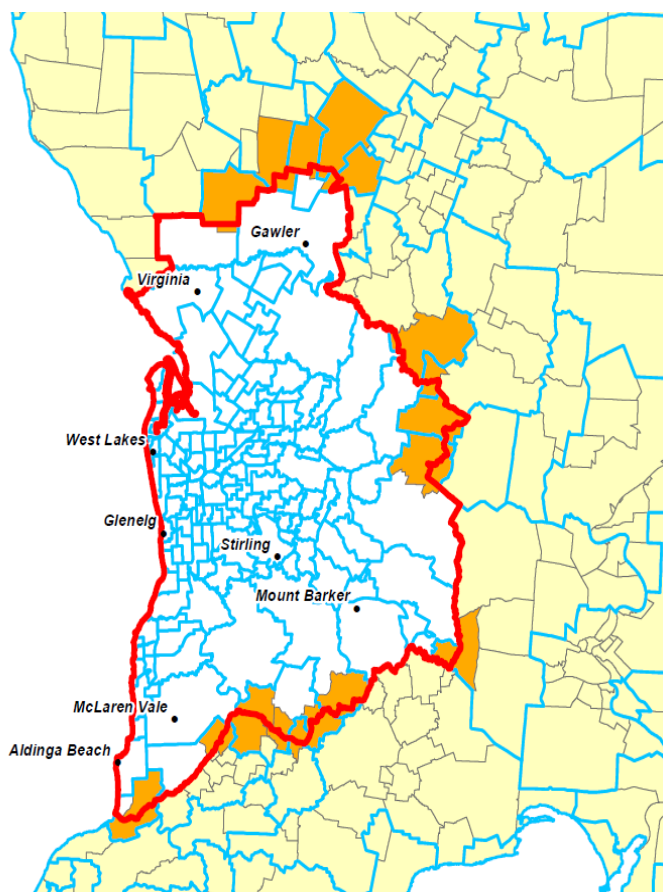
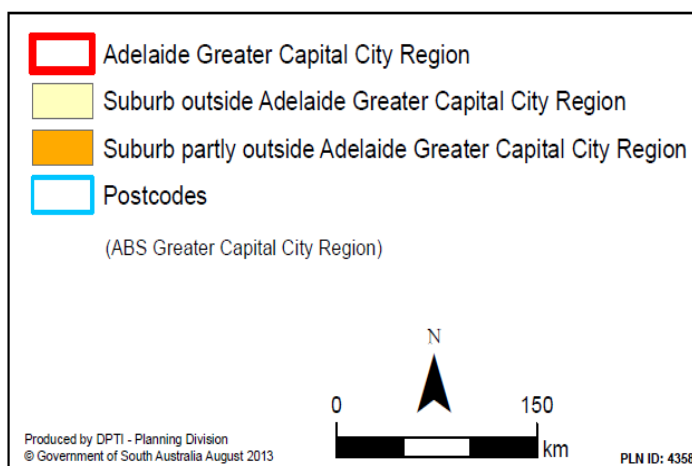


Regional South Australia Definition (also called Country Region)

Regional South Australia is all postcodes and suburbs not included or partly included in the ABS greater Adelaide definition. The post codes listed below are included within this definition are able to access state nomination regional/ requirement concessions.

Towns that do not meet this definition include Mount Barker, Stirling, Gawler, Virginia and McLaren Vale.

5153	5264	5351	5471	5605
5157	5265	5352	5472	5606
5172	5266	5353	5473	5607
5174	5267	5354	5480	5608
5201	5268	5355	5481	5609
5234	5269	5356	5482	5630
5235	5270	5357	5483	5631
5244	5271	5360	5485	5632
5254	5272	5362	5490	5633
5351	5273	5371	5491	5640
5371	5275	5373	5493	5641
5372	5276	5374	5495	5642
5400	5277	5381	5501	5650
5501	5278	5400	5502	5651
	5279	5401	5510	5652
5157	5280	5410	5520	5653
5172	5290	5411	5521	5654
5201	5291	5412	5522	5655
5202	5301	5413	5523	5660
5203	5302	5414	5540	5661
5204	5303	5415	5550	5670
5210	5304	5416	5552	5671
5211	5306	5417	5554	5680
5212	5307	5418	5555	5690
5213	5308	5419	5556	5700
5214	5309	5420	5558	5701
5220	5310	5421	5560	5710
5221	5311	5422	5570	5713
5222	5320	5431	5571	5715
5223	5321	5432	5572	5717
5235	5322	5433	5573	5719
5236	5330	5434	5575	5720
5237	5331	5440	5576	5722
5238	5332	5451	5577	5723
5253	5333	5452	5580	5724
5254	5340	5453	5581	5725
5255	5341	5454	5582	5730
5256	5342	5455	5583	5731
5259	5343	5460	5600	5732
5260	5344	5461	5601	5733
5261	5345	5462	5602	5734
5262	5346	5464	5603	
5263	5350	5470	5604	



IMMIGRATION SOUTH AUSTRALIA

For further information, please contact us at: Telephone: +61 8 8303 2420

Please Note: Any information about the law in Australia or South Australia is provided as general information only and is not legal advice. This fact sheet is a starting point only and is not a substitute for legal or professional advice. While the Department has attempted to ensure the information is accurate at the time of publishing, no responsibility will be accepted for any errors or omissions and the Government of South Australia will not be liable for any loss or damage incurred by any person as a consequence of any use, reference or reliance on this information. Any such use, reference or reliance shall be at the sole risk of that person who should seek their own legal and/or professional advice if required.